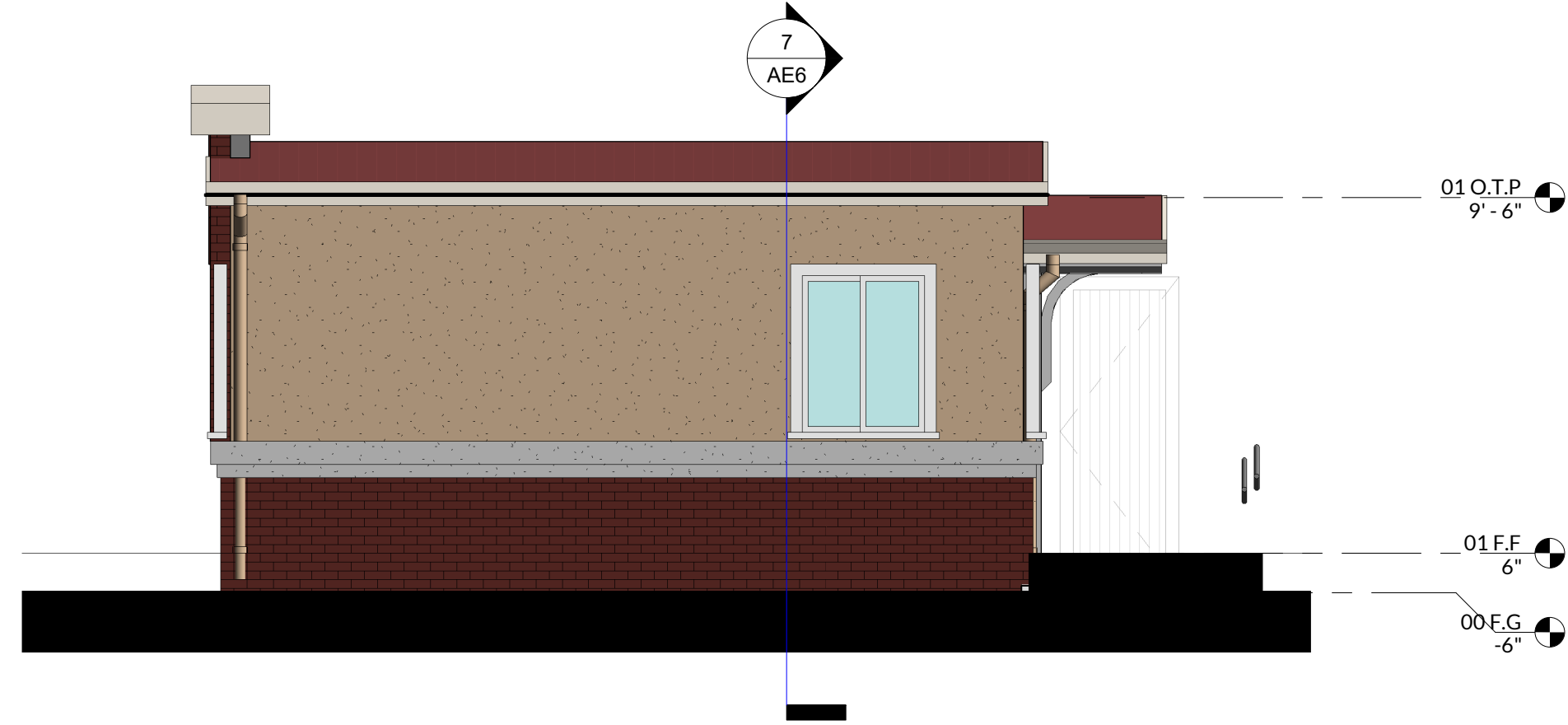
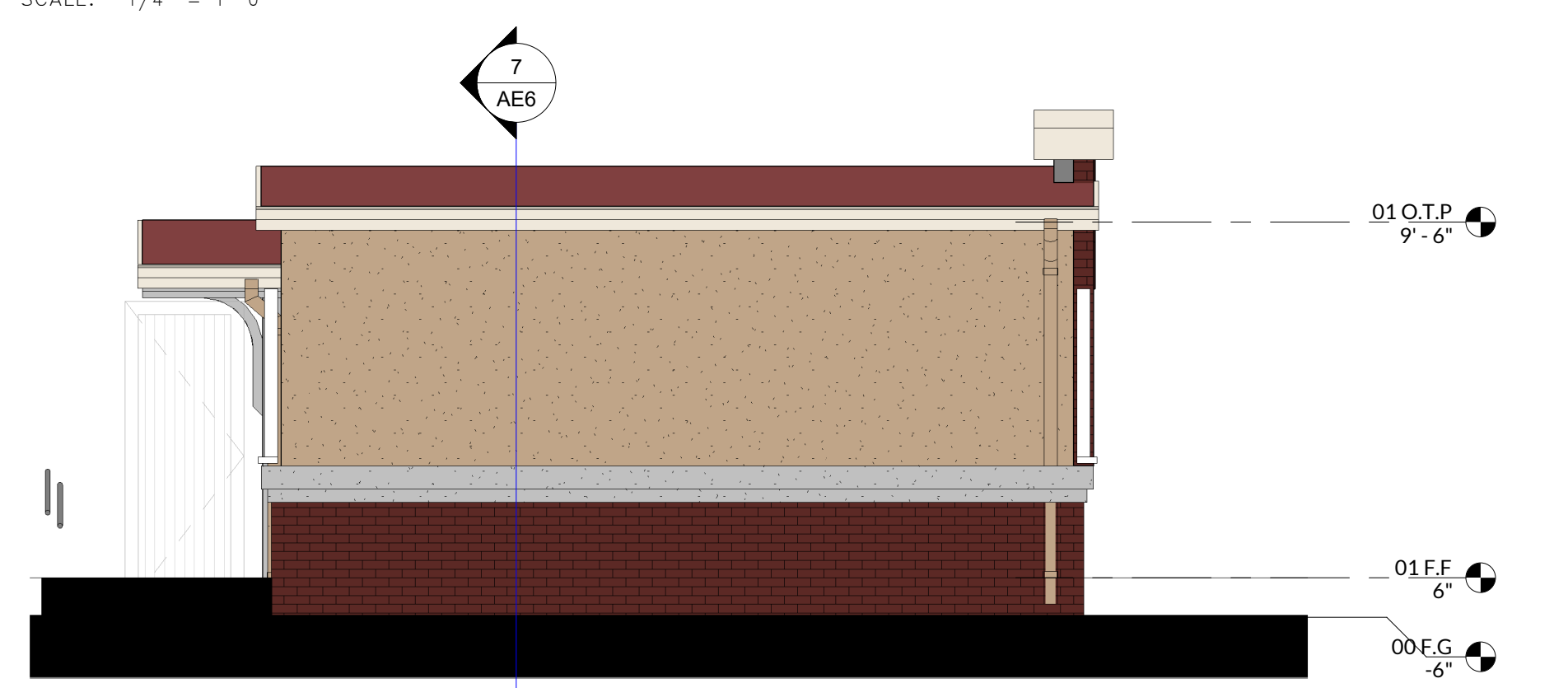


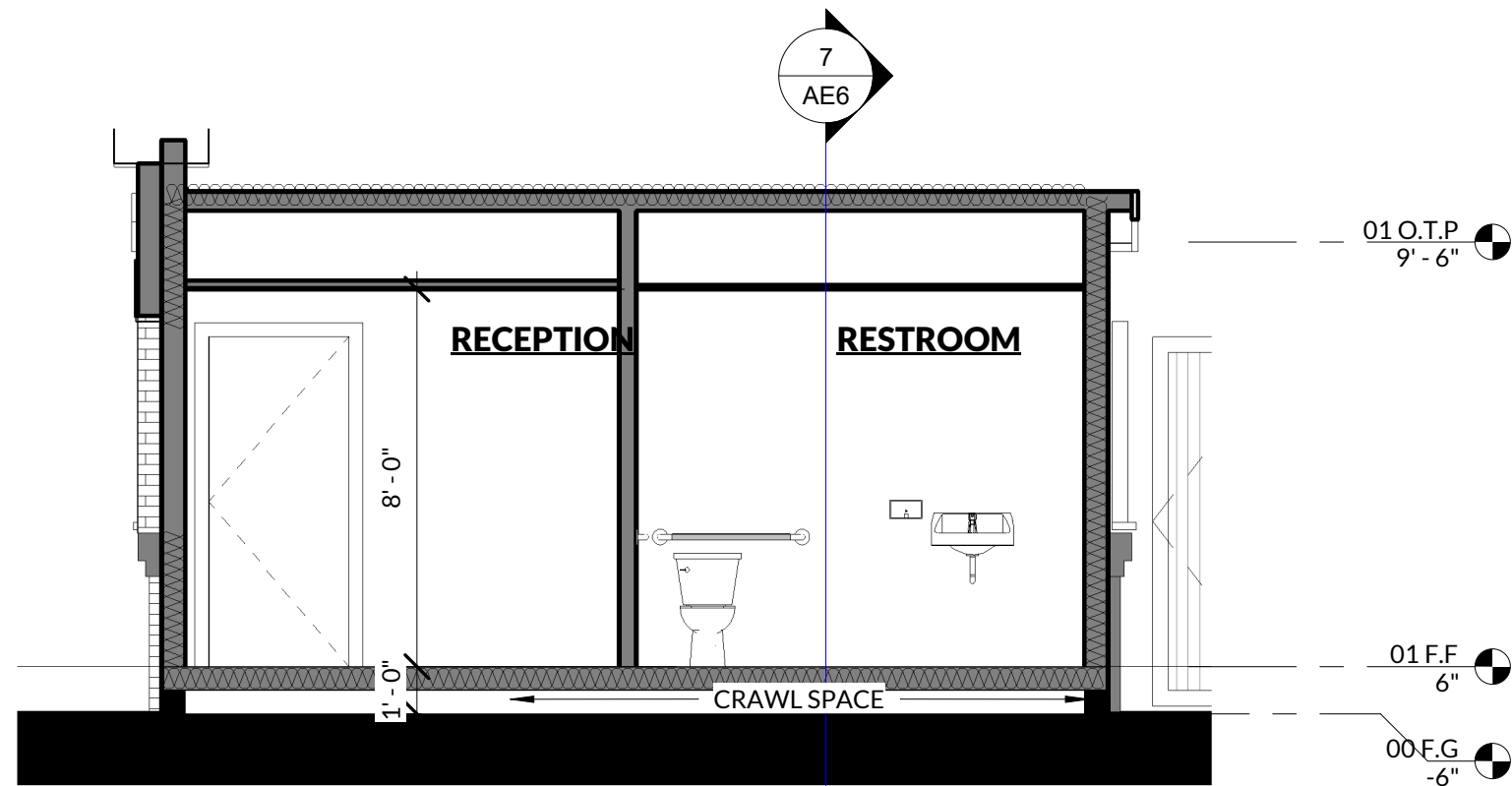
# PC EXHIBIT D



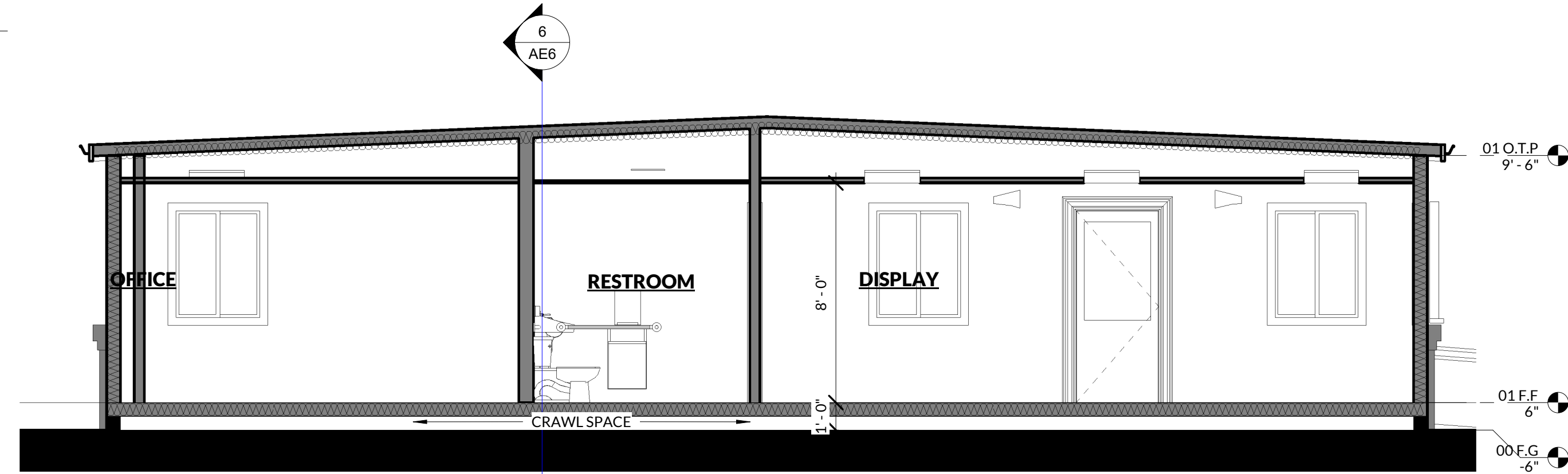
**4 ELEVATION - EAST**  
SCALE: 1/4" = 1'-0"



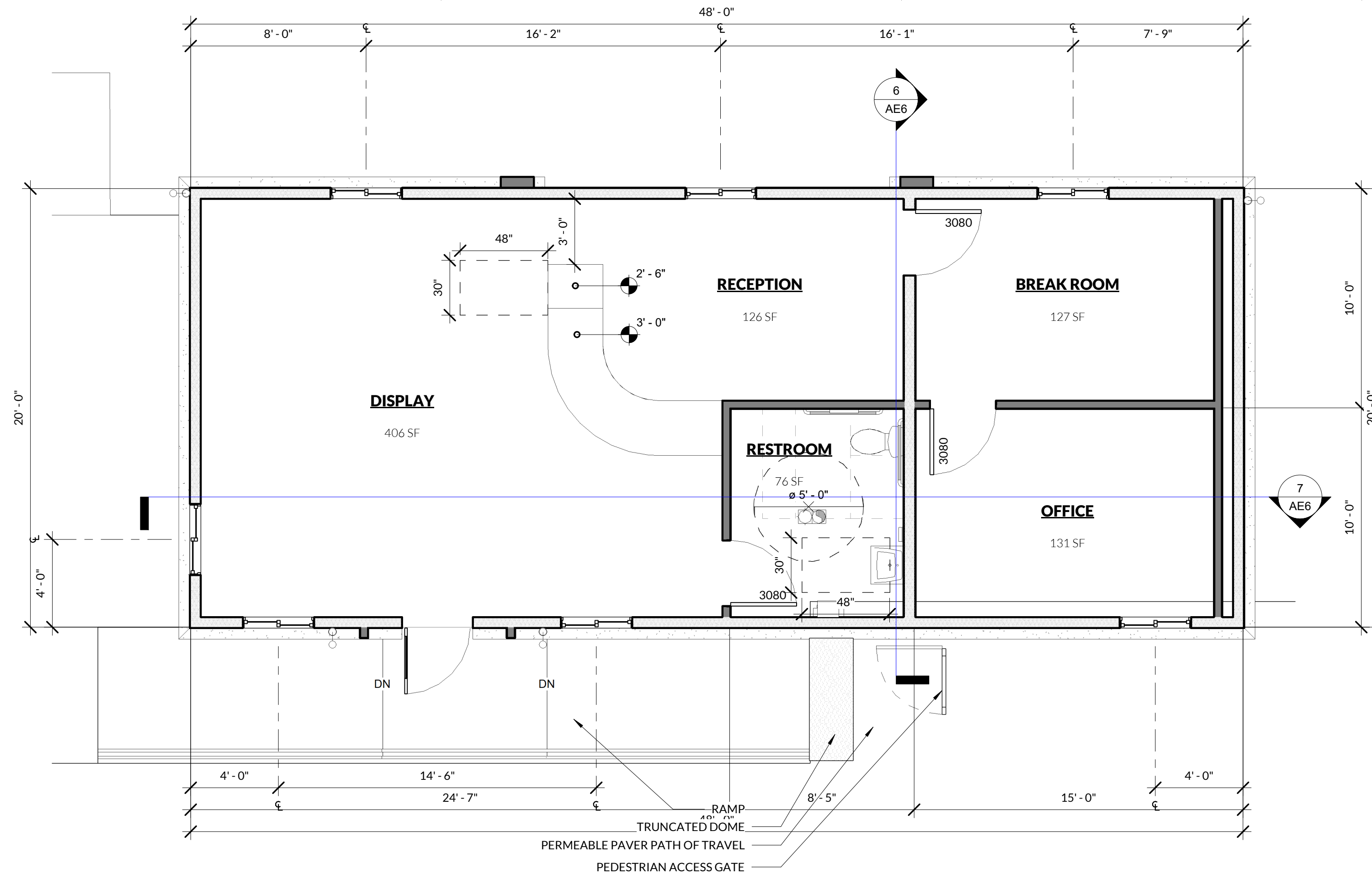
**5 ELEVATION - WEST**  
SCALE: 1/4" = 1'-0"



**6 CROSS SECTION**  
SCALE: 1/4" = 1'-0"



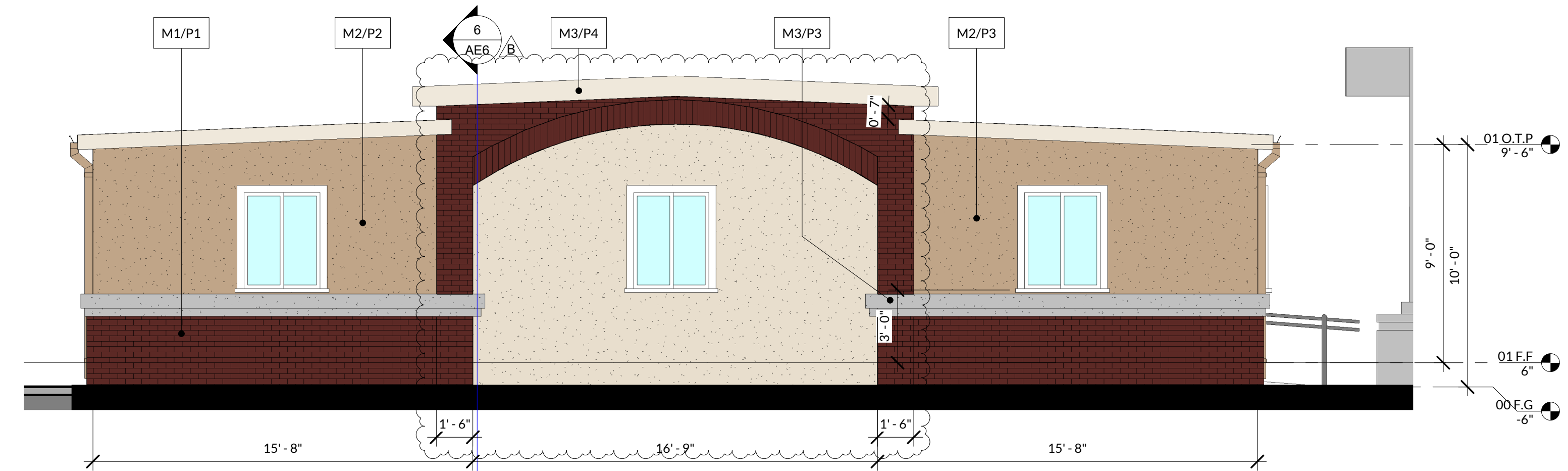
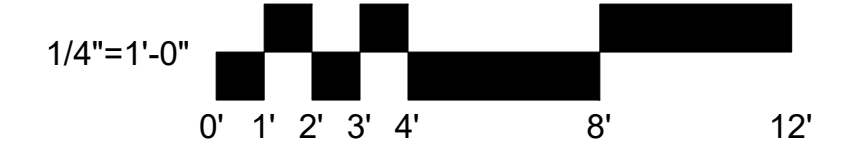
**7 LONGITUDINAL SECTION**  
SCALE: 1/4" = 1'-0"



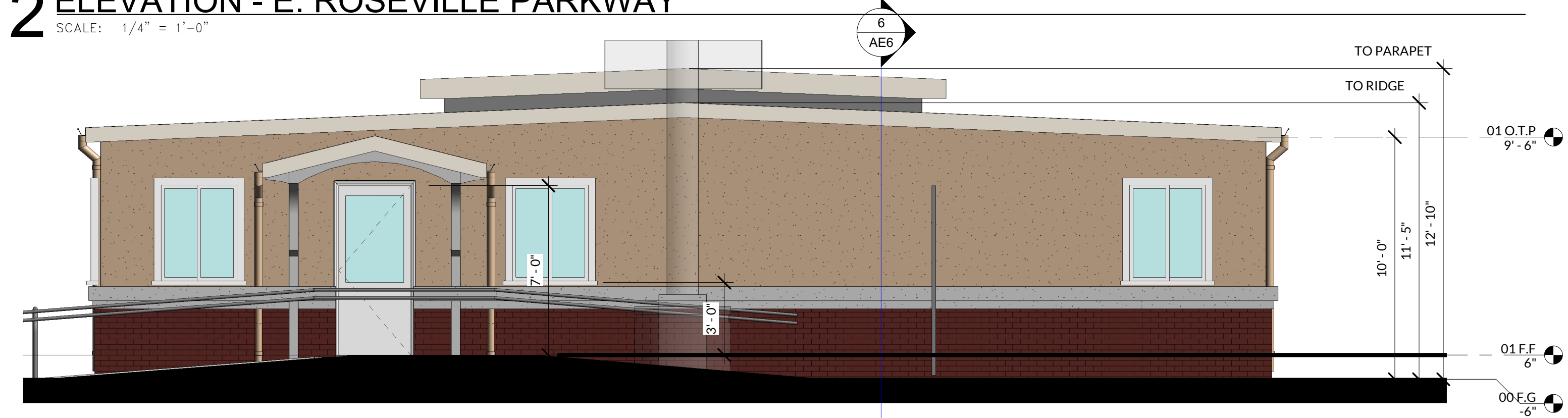
**1 PARTITION PLAN - MODULAR OFFICE** (PRODUCT BY OTHERS)  
SCALE: 1/4" = 1'-0"

## COLORS & MATERIALS

- M1** BRICK VENEER - BRICK IT - RUSTIC BURGUNDY
- M2** WOOD SIDING - PERFORMANCE MODULAR INC.
- M3** FOAM TRIM - PERFORMANCE MODULAR INC.
- M4** DECORATIVE METAL POST - PERFORMANCE MODULAR INC.
- M5** METAL ROOFING - PERFORMANCE MODULAR INC. - FOREST GREEN
- P1** BRICK VENEER - BRICK IT - RUSTIC BURGUNDY
- P2** SHERWIN-WILLIAMS - AGED WHITE - SW 9180
- P3** SHERWIN-WILLIAMS - TAMARIND - SW 7538
- P4** SHERWIN-WILLIAMS - CREAMY - SW 7102



**2 ELEVATION - E. ROSEVILLE PARKWAY**  
SCALE: 1/4" = 1'-0"



**3 ELEVATION - NORTH**  
SCALE: 1/4" = 1'-0"

# PRAXIS JOHNSON RANCH SELF STORAGE

1851 E. ROSEVILLE PKWY.  
ROSEVILLE, CA 95661  
APN: 468-010-044-000



Stamp

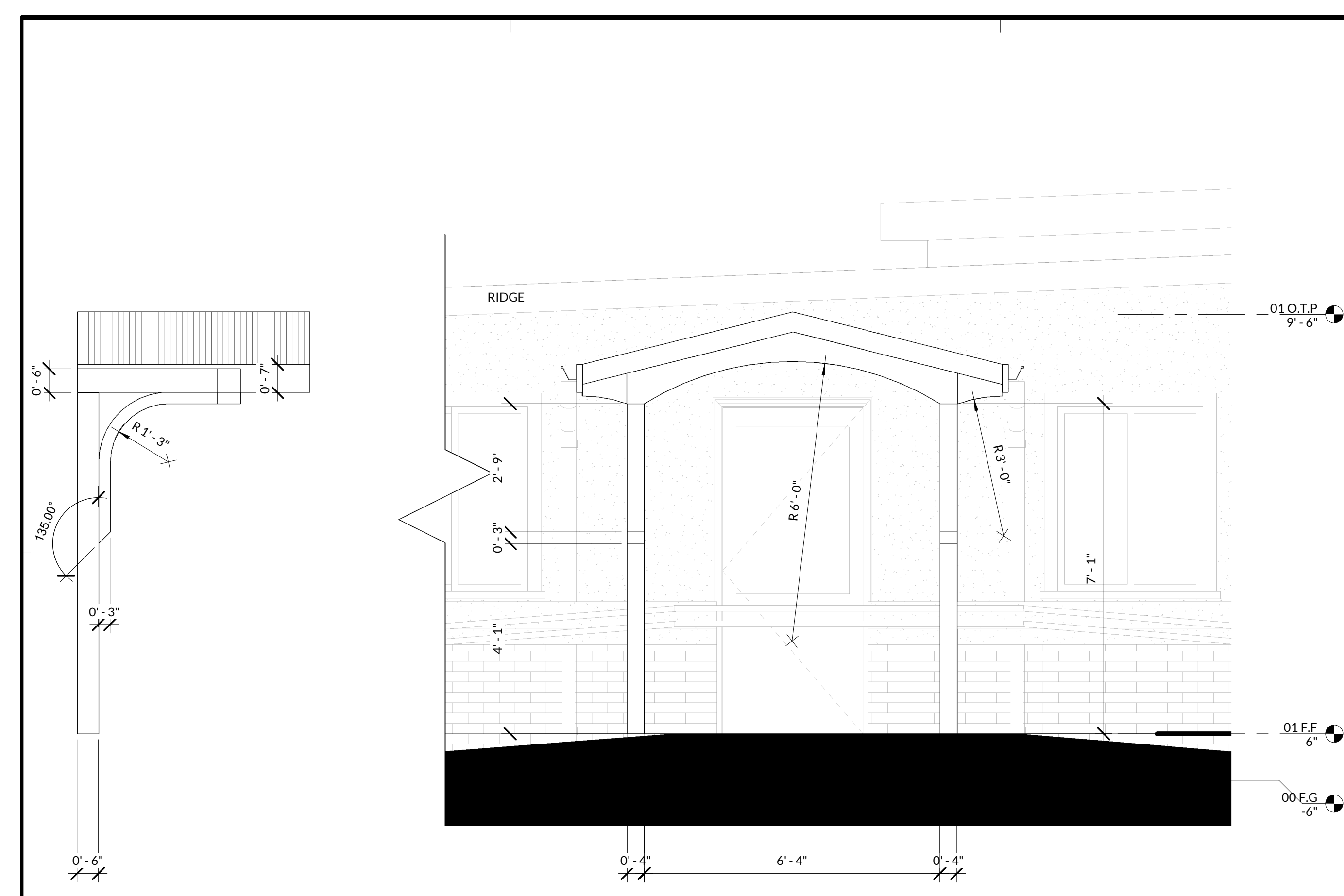
Proj. No: 2018.395  
Drawn By: Author  
Reviewed By: Checker

No.	Date	Description
B	04/09/19	PLANNING RESPONSE 2

Copyright Statement:  
All drawings and written material appearing herein constitute original and unpublished original work of the architect and may not be duplicated, used, or disclosed without prior written consent of the architect.

## PARTITION PLAN

**AE6**



### 3 DETAIL - ENTRANCE

SCALE: 1/2" = 1'-0"

**HUNTCO** Bike racks, lockers, benches and architectural site furnishings since 1983. **Tradition & Innovation**

PHONE 503.224.8700 FAX 503.224.2656 EMAIL Sales@hunto.com WEB hunto.com TWITTER @huntoosupply MAIL P.O. Box 10385 Portland, Or. 97296-0385

**THE STAPLE**  
The ever-classic "Staple" style bike rack is Portland City Code approved. Lock it up!

**CONSTRUCTION/MATERIAL OPTIONS**

- 2" Sch. 40 Round Steel Pipe (shown)
- 2" x 2" Square Steel Tubing (Pipeclutter Proof)
- 5/8" x 2 1/2" Steel Flat Bar (Pipeclutter Proof)
- Steel Flanges (Varies)

**MOUNTING OPTIONS**

- Flange Mount (Shown)
- In-Ground
- 11" Leg Extensions

**FINISH OPTIONS**

- 1304 Stainless Steel
- #4 Satin Finish
- Hot Dipped Galvanized
- Powder Coating
- Thermoplastic Coating

**ADDITIONAL OPTIONS**

- Flange Cover (available at additional cost on round pipe only)

**RECOMMENDED LAYOUT**

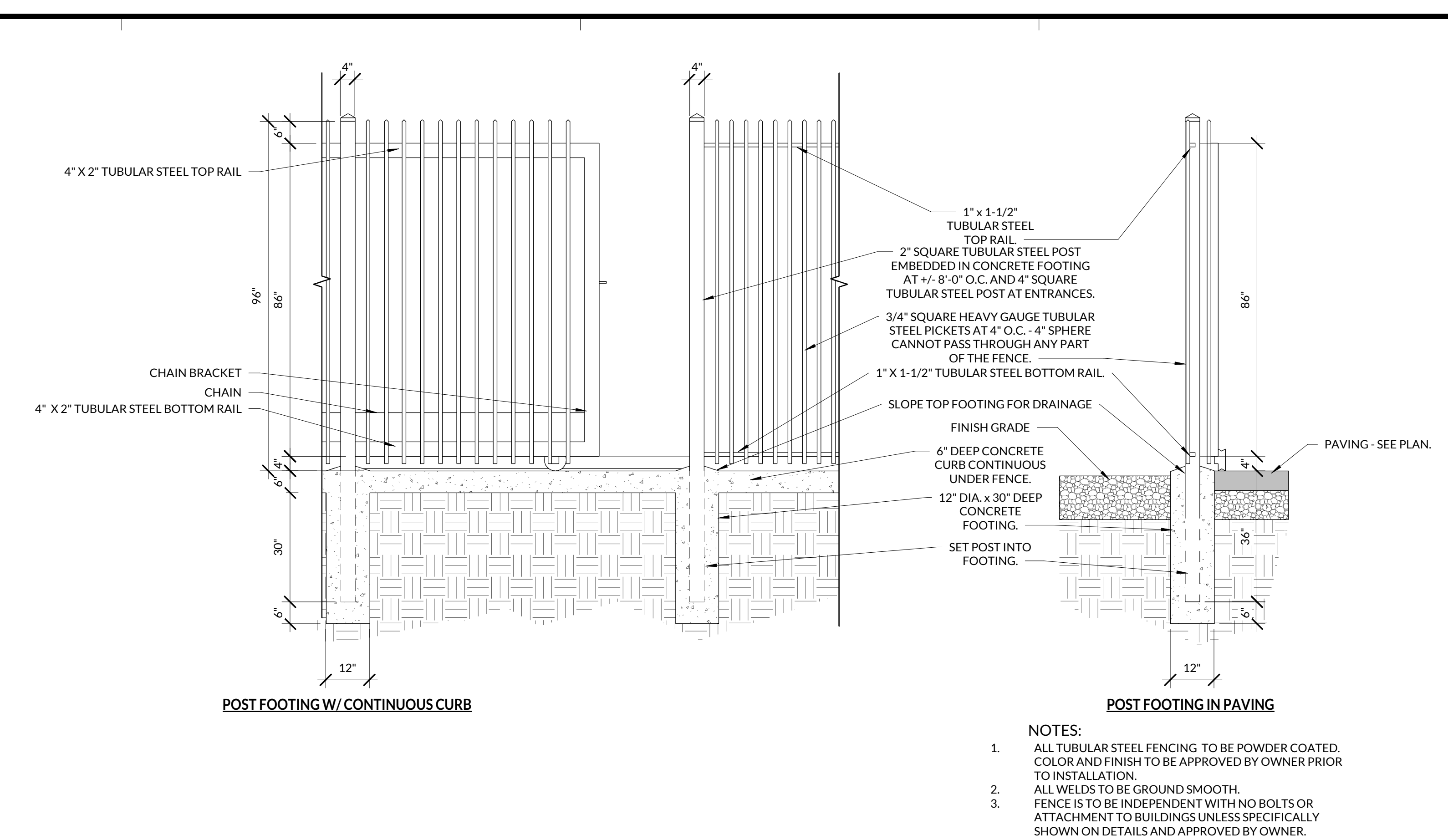
NOTES:  
\*Bike is 70"  
# Minimum Spacing  
(#) Recommended Spacing

**CONTRACTOR:**  
**JOB:**  
**NOTES:**

Manufactured in the Pacific Northwest

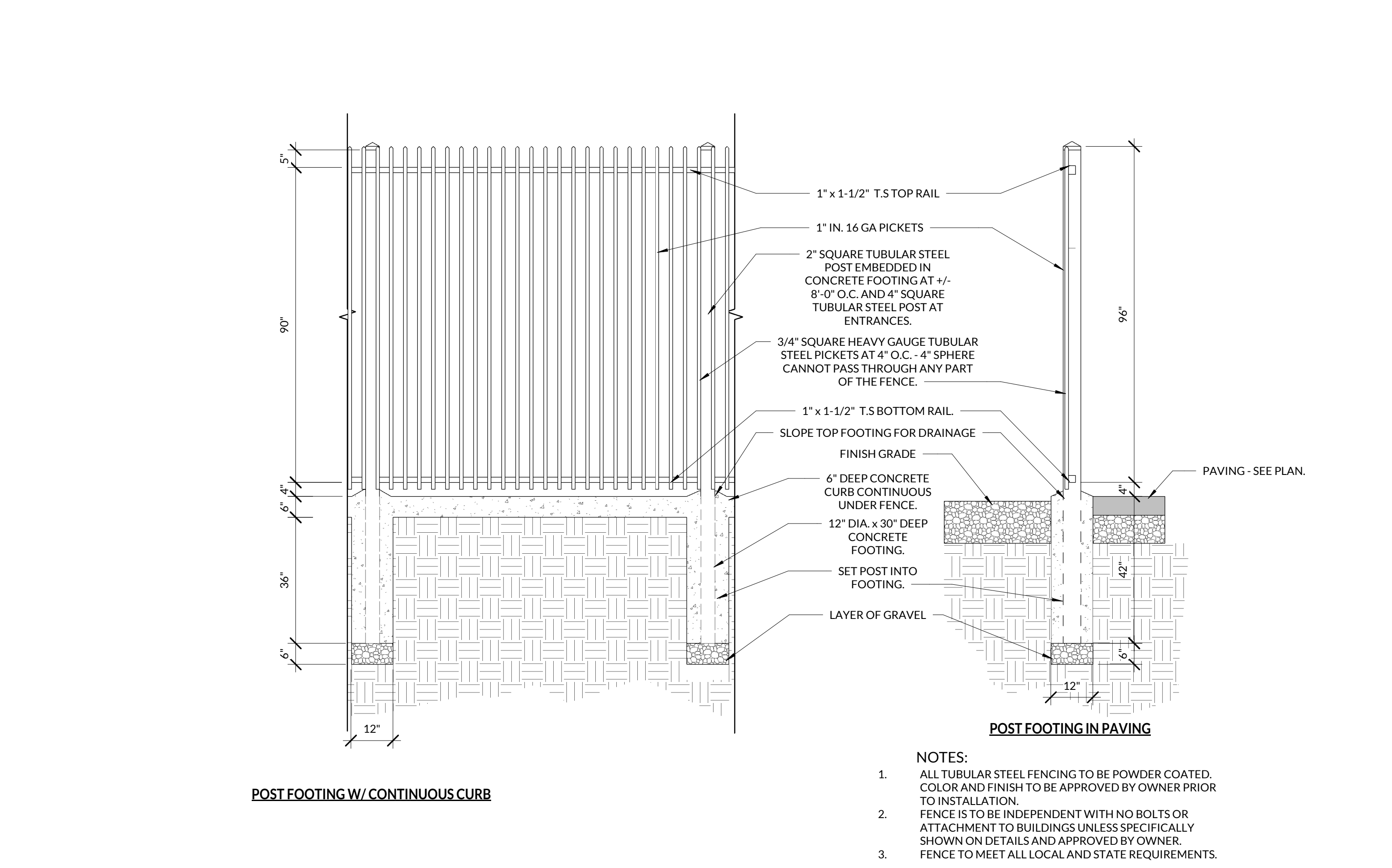
### 4 BICYCLE RACK - STAPLE STYLE

SCALE: 12" = 1'-0"



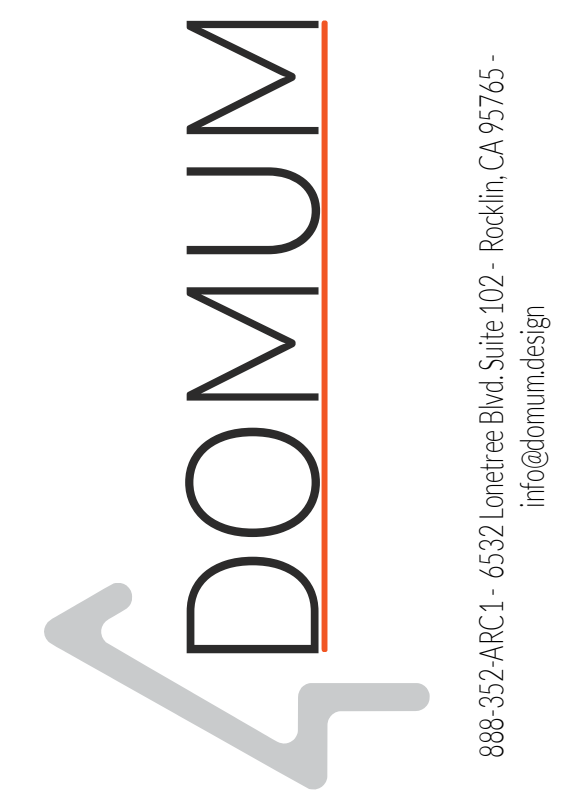
### 1 FENCING DETAIL - ORNAMENTAL ROLLING GATE

SCALE: 1/2" = 1'-0"



### 2 FENCING DETAIL - ORNAMENTAL

SCALE: 1/2" = 1'-0"



Stamp

Proj. No: 2018.395  
Drawn By: Author  
Reviewed By: Checker

No.	Date	Description
B	04/09/19	PLANNING RESPONSE 2

Copyright Statement:  
All drawings and written material appearing herein constitute original and unpublished original work of the architect and may not be duplicated, used, or disclosed without prior written consent of the architect.

### DETAILS



Z:\Active\2018.395 - Praxis - Roseville - Johnson Ranch\CAD\19-1203 - Praxis - Granite Bay Rv Storage PC2.rvt